

F100	317	F201	317
F108	317	F202	333
F110	319	F272	336
F120	321	F300	328
F130	322	F302	334
F140	323	F310	329
F150	324	F312	335
F170	325	F320	330
F180	326	F330	331
F190	327	F370	332



313 - 336



螺纹形式	Tipo de Rosca	Forma de Rosca	Thread form
标准	Norma	Estándar	Standard
公差	Tolerância	Tolerancia	Tolerance
倒锥	Chanfro	Chañlán	Chamfer
材料	Material	Material	Material
加工方向	Direção	Dirección	Direction
涂层	Tratamento	Tratamiento superficial	Coating
<ul style="list-style-type: none"> ■ 性能卓越 ■ 性能良好 实例 10 = 外缘处的切削速度, 米/分, +/- 10%	Excelente para a Aplicação Bom para a Aplicação Exemplo 10 = Velocidade periférica em metros/minuto +/- 10%	Excelente para Aplicación Bueno para Aplicación Ejemplo 10 = Velocidad Periférica en metros/minuto +/- 10%	Excellent for Application Good for Application Example 10 = Peripheral speed in metres/minute +/- 10%
产品型号	Código	Código de producto	Product Codes
尺寸范围	Gama de medidas	Rango de Diámetros	Size Range

AMG	中文	Português	Español	English
1.1	铁磁性低碳钢	Aço macio magnético	Acero blando	Magnetic soft steel
1.2	结构钢, 表面渗碳钢	Aço estrutural, Aço cementado	Acero de construcción/cementación	Structural steel, case carburizing steel
1.3	普通碳钢	Aço-carbono	Acero al carbono	Plain Carbon steel
1.4	合金钢	Aço de liga	Acero aleado	Alloy steel
1.5	合金钢, 淬火回火钢	Aço de liga, Aço temperado	Acero aleado/temple y revenido	Alloy steel, Hardened and tempered steel
1.6	合金钢, 淬火回火钢	Aço de liga, Aço temperado	Acero aleado/temple y revenido	Alloy steel, Hardened and tempered steel
1.7	热处理合金钢	Aço de liga temperado	Acero aleado cementado	Alloy steel, Heat treated
1.8	淬火合金钢, 耐磨钢	Aço de liga temperado	Acero aleado cementado	Alloy steel, Hardened & Wear resistant steel
2.1	易切削不锈钢	Aço inoxidável de maquinagem fácil	Acero inoxidable fácil mecanizado	Free machining, Stainless Steel
2.2	奥氏体不锈钢	Austenítico	Austenítico	Austenitic
2.3	铁素体 + 奥氏体, 马氏体不锈钢	Ferrítico + Austenítico + Martensítico	Ferrítico, Ferr. + Aust., Marten	Ferritic + Austenitic, Ferritic, Martensitic
2.4	沉淀硬化不锈钢	Aço inoxidável de fácil usinagem	Acero Inoxidable Templado	Precipitation Hardened
3.1	灰铸铁	Grafite laminar	Con grafito laminar	Lamellar graphite
3.2	灰铸铁	Grafite laminar	Con grafito laminar	Lamellar graphite
3.3	球墨铸铁, 可锻铸铁	Grafite nodular/ Ferro fundido maleável	Con graf. laminar, fundic. maleable	Nodular graphite, Malleable Cast Iron
3.4	球墨铸铁, 可锻铸铁	Grafite nodular/ Ferro fundido maleável	Con graf. laminar, fundic. maleable	Nodular graphite, Malleable Cast Iron
4.1	纯钛	Titânio, sem liga	Titanio no aleado	Titanium, unalloyed
4.2	钛合金	Titânio, com liga	Titanio aleado	Titanium, alloyed
4.3	钛合金	Titânio, com liga	Titanio aleado	Titanium, alloyed
5.1	纯镍	Níquel, sem liga	Níquel no aleado	Nickel, unalloyed
5.2	镍合金	Níquel, com liga	Níquel aleado	Nickel, alloyed
5.3	镍合金	Níquel, com liga	Níquel aleado	Nickel, alloyed
6.1	紫铜	Cobre	Cobre	Copper
6.2	β黄铜, 青铜	Latão beta, bronze	β-Latón, bronce	β-Brass, Bronze
6.3	α黄铜	Latão alfa	α-Latón	α-Brass
6.4	高强度青铜	Bronze de alta resistência	Metal AMPCO	High Strength Bronze
7.1	纯铝, 纯镁	Al, Mg, sem liga	Al, Mg, no aleado	Al, Mg, unalloyed
7.2	铝合金, 硅含量 < 0.5%	Al com liga, Si<0.5%	Al aleado con Si < 0.5%	Al alloyed, Si < 0.5%
7.3	铝合金, 硅含量 > 0.5% < 10%	Al com liga, Si>0.5%<10%	Al aleado con Si > 0.5% < 10%	Al alloyed, Si > 0.5% < 10%
7.4	铝合金, 硅含量 > 10% 晶须增强铝合金, 镁合金	Al com liga, Si>10% reforçadas com monocristais filiformes, ligas de Al/Mg	Al aleado, Si>10% Reforzado por filamentos, Al-aleados, Mg-aleados	Al alloyed, Si > 10% Whisker reinforced Al-alloys Mg-alloys
8.1	热塑性塑料	Termoplásticos	Termoplásticos	Thermoplastics
8.2	热固性塑料	Plásticos termoduros	Plásticos endurecidos por calor	Thermosetting plastics
8.3	增强塑料	Materiais plásticos reforçados	Materiales plásticos reforzados	Reinforced plastic materials
9.1	金属陶瓷	Cerametal (metalocerâmica)	Cerametales (metales-cerâmicas)	Cermets (metals-ceramics)
10.1	标准石墨	Grafite standard	Grafito standard	Graphite

M	M	M	MF	UNC	UNF	BSW	BSF	G	NPT	PG
ISO 2568	ISO 2568	ISO 2568	ISO 2568	ISO 2568	ISO 2568	ISO 2568	ISO 2568	ISO 2568	ISO 2568	ISO 2568
6g	6g	6g	6g	2A	2A	Medium	Medium	Class A	Normal	Normal
1.75XP	1.75XP	2.25XP	1.75XP	1.75XP	1.75XP	1.75XP	1.75XP	1.75XP	1.75XP	1.75XP
HSS	HSS	HSS-E	HSS	HSS	HSS	HSS	HSS	HSS	HSS	HSS



F100	F201	F108	F110	F120	F130	F140	F150	F170	F180	F190
M2 - M42	M3 - M20	M2 - M20	M4 - M40	No.8 - 1"	No.10 - 1"	1/8 - 1"	3/16 - 1/2	1/8 - 2"	1/8 - 1"	PG7 - PG36

AMG	317	317	317	319	321	322	323	324	325	326	327	ISO
1.1	8	8	8	8	8	8	8	8	8	8	8	P 1
1.2	7	7	7	7	7	7	7	7	7	7	7	P 1
1.3	6	6	6	6	6	6	6	6	6	6	6	P 2
1.4	5	5	5	5	5	5	5	5	5	5	5	P 3
1.5			4									P 4
1.6												H 1
1.7												H 3
1.8												H 4
2.1	4	4	4	4	4	4	4	4	4	4	4	M 1
2.2	2	2	2	2	2	2	2	2	2	2	2	M 3
2.3			1									M 2
2.4												S 2
3.1	8	8	8	8	8	8	8	8	8	8	8	K 1
3.2	7	7	7	7	7	7	7	7	7	7	7	K 2
3.3	6	6	6	6	6	6	6	6	6	6	6	K 3
3.4	5	5	5	5	5	5	5	5	5	5	5	K 4
4.1			2									S 1
4.2												S 2
4.3	2	2	2	2	2	2	2	2	2	2	2	S 3
5.1	9	9	9	9	9	9	9	9	9	9	9	S 1
5.2	2	2	2	2	2	2	2	2	2	2	2	S 2
5.3	2	2	2	2	2	2	2	2	2	2	2	S 3
6.1	9	9	9	9	9	9	9	9	9	9	9	N 3
6.2	8	8	8	8	8	8	8	8	8	8	8	N 4
6.3	7	7	7	7	7	7	7	7	7	7	7	N 3
6.4			2									N 4
7.1	10	10	10	10	10	10	10	10	10	10	10	N 1
7.2	15	15	15	15	15	15	15	15	15	15	15	N 1
7.3	15	15	15	15	15	15	15	15	15	15	15	N 1
7.4	10	10	10	10	10	10	10	10	10	10	10	N 2
8.1	15	15	15	15	15	15	15	15	15	15	15	O
8.2	10	10	10	10	10	10	10	10	10	10	10	O
8.3	5	5	5	5	5	5	5	5	5	5	5	O
9.1												H
10.1												O

M	MF	UNC	UNF	G	M	M	MF	G
BS 1127: 1950	BS 1127: 1950	BS 1127: 1950	BS 1127: 1950	BS 1127: 1950	DIN 382	BS 1127: 1950	BS 1127: 1950	DIN 382
					6g	6g	6g	Class A
1.75XP	1.75XP	1.75XP	1.75XP	1.75XP	1.75XP	1.75XP	1.75XP	1.75XP
HSS	HSS	HSS	HSS	HSS	HSS	HSS	HSS	HSS



F300	F310	F320	F330	F370	F202	F302	F312	F272
M2 - M36	M3 - M30	No.4 - 1.1/4	No.4 - 1.1/2	1/8 - 1.1/2	M3 - M36	M3 - M36	M8 - M24	1/8 - 1.1/2

AMG	328	329	330	331	332	333	334	335	336	ISO
1.1	■8	■8	■8	■8	■8	■8	■8	■8	■8	P 1
1.2	■7	■7	■7	■7	■7	■7	■7	■7	■7	P 1
1.3	■6	■6	■6	■6	■6	■6	■6	■6	■6	P 2
1.4	■5	■5	■5	■5	■5	■5	■5	■5	■5	P 3
1.5										P 4
1.6										H 1
1.7										H 3
1.8										H 4
2.1	■4	■4	■4	■4	■4	■4	■4	■4	■4	M 1
2.2	■2	■2	■2	■2	■2	■2	■2	■2	■2	M 3
2.3										M 2
2.4										S 2
3.1	■8	■8	■8	■8	■8	■8	■8	■8	■8	K 1
3.2	■7	■7	■7	■7	■7	■7	■7	■7	■7	K 2
3.3	■6	■6	■6	■6	■6	■6	■6	■6	■6	K 3
3.4	■5	■5	■5	■5	■5	■5	■5	■5	■5	K 4
4.1										S 1
4.2										S 2
4.3	■2	■2	■2	■2	■2	■2	■2	■2	■2	S 3
5.1	■9	■9	■9	■9	■9	■9	■9	■9	■9	S 1
5.2	■2	■2	■2	■2	■2	■2	■2	■2	■2	S 2
5.3	■2	■2	■2	■2	■2	■2	■2	■2	■2	S 3
6.1	■9	■9	■9	■9	■9	■9	■9	■9	■9	N 3
6.2	■8	■8	■8	■8	■8	■8	■8	■8	■8	N 4
6.3	■7	■7	■7	■7	■7	■7	■7	■7	■7	N 3
6.4										N 4
7.1	■10	■10	■10	■10	■10	■10	■10	■10	■10	N 1
7.2	■15	■15	■15	■15	■15	■15	■15	■15	■15	N 1
7.3	■15	■15	■15	■15	■15	■15	■15	■15	■15	N 1
7.4	■10	■10	■10	■10	■10	■10	■10	■10	■10	N 2
8.1	■15	■15	■15	■15	■15	■15	■15	■15	■15	O
8.2	■10	■10	■10	■10	■10	■10	■10	■10	■10	O
8.3	■5	■5	■5	■5	■5	■5	■5	■5	■5	O
9.1										H
10.1										O

F100	M	ISO 2568	6g	1.75XP	HSS		
F201	M	ISO 2568	6g	1.75XP	HSS		
F108	M	ISO 2568	6g	2.25XP	HSS-E		



F100

- M 带刃倾角板牙

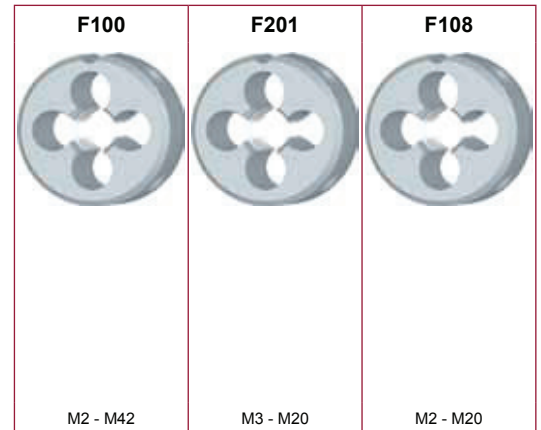
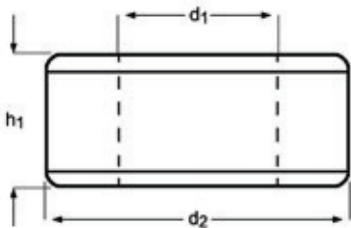
F201

- M Cossinete
- M Terrajas de roscar

F108

- M Gun Nosed Die

F100; F201	▪	1.1	1.2	1.3	3.1	3.2	3.3	7.1	7.2	7.3								
	•	1.4	2.1	2.2	3.4	4.3	5.1	5.2	5.3	6.1	6.2	6.3	7.4	8.1	8.2	8.3		
F108	▪	1.3	1.4	2.1	2.2	3.1	3.2	3.3	7.1	7.2	7.3							
	•	1.1	1.2	1.5	2.3	3.4	4.1	4.3	5.1	5.2	5.3	6.1	6.2	6.3	6.4	7.4	8.1	8.2



M	P mm	d ₂ Ø mm	h ₁ mm	F100	F201	F108
2	0.40	16	5	F100M2		F108M2
2.5	0.45	16	5	F100M2.5		F108M2.5
2.6	0.45	16	5	F100M2.6		
3	0.50	20	5	F100M3	F201M3	F108M3
3.5	0.60	20	5	F100M3.5		
4	0.70	20	5	F100M4	F201M4	F108M4
4.5	0.75	20	7	F100M4.5		
5	0.80	20	7	F100M5	F201M5	F108M5
6	1.00	20	7	F100M6	F201M6	F108M6
7	1.00	25	9	F100M7		
8	1.25	25	9	F100M8	F201M8	F108M8
9	1.25	25	9	F100M9		
10	1.50	30	11	F100M10	F201M10	F108M10
11	1.50	30	11	F100M11		
12	1.75	38	14	F100M12	F201M12	F108M12
14	2.00	38	14	F100M14	F201M14	F108M14
16	2.00	45	18	F100M16	F201M16	F108M16
18	2.50	45	18	F100M18	F201M18	F108M18
20	2.50	45	18	F100M20	F201M20	F108M20
22	2.50	55	22	F100M22		
24	3.00	55	22	F100M24		
27	3.00	65	25	F100M27		
30	3.50	65	25	F100M30		

¹⁾ 不带刃倾角 / Sem ponta helicoidal / Sin entrada en hélice / Without gun-nose

M	P mm	d₂ ∅ mm	h₁ mm	F100	F201	F108
33	3.50	65	25	F100M33		
36	4.00	65	25	F100M36		
39	4.00	75	30	F100M39		
42	4.50	75	30	F100M42		

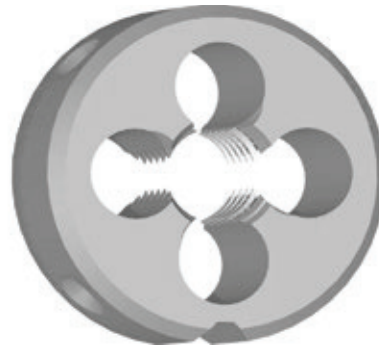
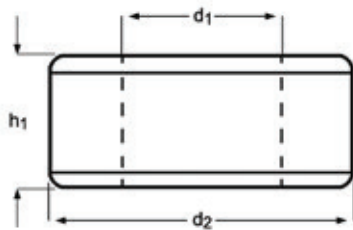
F110



- MF 带刃倾角板牙
- MF Cossinete
- MF Terrajas de roscar
- MF Gun Nosed Die

F110

F110	▪	1.1	1.2	1.3	3.1	3.2	3.3	7.1	7.2	7.3						
	•	1.4	2.1	2.2	3.4	4.3	5.1	5.2	5.3	6.1	6.2	6.3	7.4	8.1	8.2	8.3



MF	P mm	d ₂ Ø mm	h ₁ mm	F110
4	0.50	20	5	F110M4X.5
5	0.50	20	5	F110M5X.5
6	0.75	20	7	F110M6X.75
7	0.75	25	9	F110M7X.75
8	0.75	25	9	F110M8X.75
8	1.00	25	9	F110M8X1.0
9	1.00	25	9	F110M9X1.0
10	0.75	30	11	F110M10X.75
10	1.00	30	11	F110M10X1.0
10	1.25	30	11	F110M10X1.25
11	1.00	30	11	F110M11X1.0
12	1.00	38	10	F110M12X1.0
12	1.25	38	10	F110M12X1.25
12	1.50	38	10	F110M12X1.5
13	1.00	38	10	F110M13X1.0
14	1.00	38	10	F110M14X1.0
14	1.25	38	10	F110M14X1.25
14	1.50	38	10	F110M14X1.5
15	1.00	38	10	F110M15X1.0
15	1.50	38	10	F110M15X1.5
16	1.00	45	14	F110M16X1.0
16	1.50	45	14	F110M16X1.5
18	1.00	45	14	F110M18X1.0
18	1.50	45	14	F110M18X1.5
20	1.00	45	14	F110M20X1.0
20	1.50	45	14	F110M20X1.5
22	1.00	55	16	F110M22X1.0
22	1.50	55	16	F110M22X1.5
24	1.00	55	16	F110M24X1.0
24	1.50	55	16	F110M24X1.5
24	2.00	55	16	F110M24X2.0
25	1.50	55	16	F110M25X1.5
26	1.50	55	16	F110M26X1.5
27	1.50	65	18	F110M27X1.5
27	2.00	65	18	F110M27X2.0
28	1.50	65	18	F110M28X1.5

MF	P mm	d₂ ∅ mm	h₁ mm	F110
30	1.50	65	18	F110M30X1.5
32	1.50	65	18	F110M32X1.5
35	1.50	65	18	F110M35X1.5
36	1.50	65	18	F110M36X1.5
40	1.50	75	20	F110M40X1.5

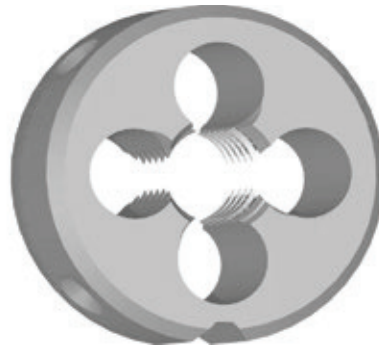
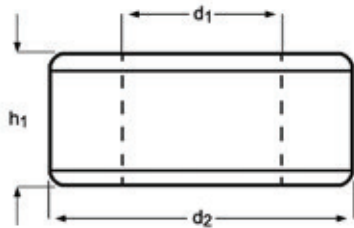
F120



- UNC 带刃倾角板牙
- UNC Cossinete
- UNC Terrajas de roscar
- UNC Gun Nosed Die

F120

F120	▪	1.1	1.2	1.3	3.1	3.2	3.3	7.1	7.2	7.3						
	•	1.4	2.1	2.2	3.4	4.3	5.1	5.2	5.3	6.1	6.2	6.3	7.4	8.1	8.2	8.3



UNC	TPI	d ₁ nom mm	d ₂ Ø mm	h ₁ mm	F120
8	32	4.17	20	7	F1208-32
10	24	4.83	20	7	F12010-24
1/4	20	6.35	20	7	F1201/4
5/16	18	7.94	25	9	F1205/16
3/8	16	9.53	30	11	F1203/8
7/16	14	11.11	30	11	F1207/16
1/2	13	12.70	38	14	F1201/2
9/16	12	14.29	38	14	F1209/16
5/8	11	15.88	45	18	F1205/8
3/4	10	19.05	45	18	F1203/4
7/8	9	22.23	55	22	F1207/8
1"	8	25.40	55	22	F1201

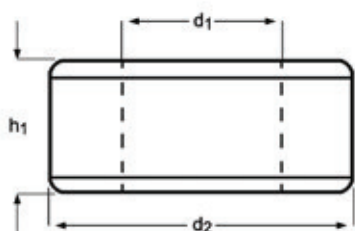
F130



- UNF 带刃倾角板牙
- UNF Cossinete
- UNF Terrajas de roscar
- UNF Gun Nosed Die

F130

F130	■	1.1	1.2	1.3	3.1	3.2	3.3	7.1	7.2	7.3						
	•	1.4	2.1	2.2	3.4	4.3	5.1	5.2	5.3	6.1	6.2	6.3	7.4	8.1	8.2	8.3



UNF	TPI	d ₁ nom mm	d ₂ Ø mm	h ₁ mm	F130
10	32	4.83	20	7	F13010-32
1/4	28	6.35	20	7	F1301/4
5/16	24	7.94	25	9	F1305/16
3/8	24	9.53	30	11	F1303/8
7/16	20	11.11	30	11	F1307/16
1/2	20	12.70	38	10	F1301/2
9/16	18	14.29	38	10	F1309/16
5/8	18	15.88	45	14	F1305/8
3/4	16	19.05	45	14	F1303/4
7/8	14	22.23	55	16	F1307/8
1"	12	25.40	55	16	F1301

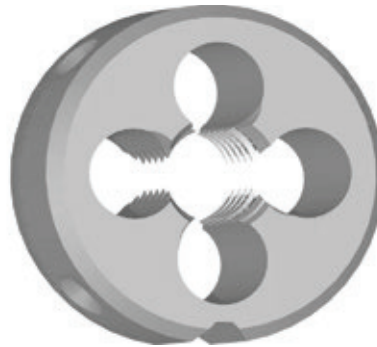
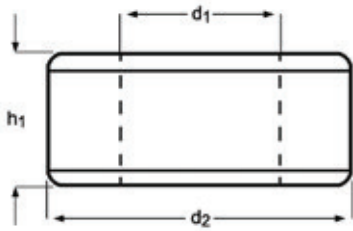
F140



- BSW 带刃倾角板牙
- BSW Cossinete
- BSW Terrajas de roscar
- BSW Gun Nosed Die

F140

F140	▪	1.1	1.2	1.3	3.1	3.2	3.3	7.1	7.2	7.3							
	•	1.4	2.1	2.2	3.4	4.3	5.1	5.2	5.3	6.1	6.2	6.3	7.4	8.1	8.2	8.3	



BSW	TPI	d ₁ nom mm	d ₂ Ø mm	h ₁ mm	F140
1/8	40	3.17	20	5	F1401/8
3/16	24	4.76	20	7	F1403/16
1/4	20	6.35	20	7	F1401/4
5/16	18	7.94	25	9	F1405/16
3/8	16	9.53	30	11	F1403/8
7/16	14	11.11	30	11	F1407/16
1/2	12	12.70	38	14	F1401/2
5/8	11	15.88	45	18	F1405/8
3/4	10	19.05	45	18	F1403/4
7/8	9	22.23	55	22	F1407/8
1"	8	25.40	55	22	F1401

F150

BSF

ISO
2568

Medium

1.75XP

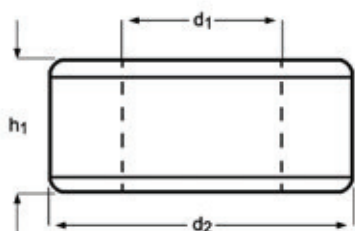
HSS



- BSF 带刃倾角板牙
- BSF Cossinete
- BSF Terrajas de roscar
- BSF Gun Nosed Die

F150

F150	▪	1.1	1.2	1.3	3.1	3.2	3.3	7.1	7.2	7.3						
	•	1.4	2.1	2.2	3.4	4.3	5.1	5.2	5.3	6.1	6.2	6.3	7.4	8.1	8.2	8.3



BSF	TPI	d_1 nom mm	d_2 \emptyset mm	h_1 mm	F150
3/16	32	4.76	20	7	F1503/16
1/4	26	6.35	20	7	F1501/4
5/16	22	7.94	25	9	F1505/16
3/8	20	9.53	30	11	F1503/8
7/16	18	11.11	30	11	F1507/16
1/2	16	12.70	38	10	F1501/2

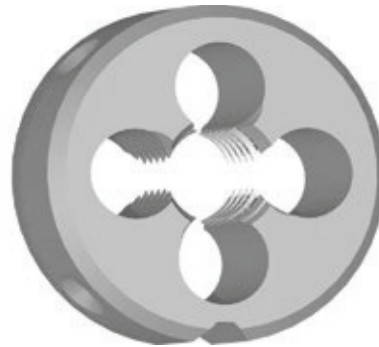
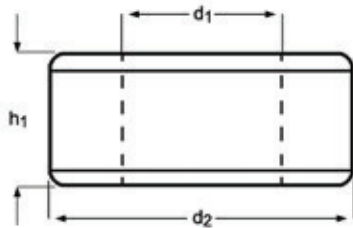
F170



- G(BSP) 带刃倾角板牙
- G(BSP) Cossinete
- G(BSP) Terrajas de roscar
- G(BSP) Gun Nosed Die

F170

F170	■	1.1	1.2	1.3	3.1	3.2	3.3	7.1	7.2	7.3						
	•	1.4	2.1	2.2	3.4	4.3	5.1	5.2	5.3	6.1	6.2	6.3	7.4	8.1	8.2	8.3



G(BSP)	TPI	d ₁ nom mm	d ₂ Ø mm	h ₁ mm	F170
1/8	28	9.73	30	11	F1701/8
1/4	19	13.16	38	10	F1701/4
3/8	19	16.66	45	14	F1703/8
1/2	14	20.96	45	14	F1701/2
5/8	14	22.91	55	16	F1705/8
3/4	14	26.44	55	16	F1703/4
7/8	14	30.20	65	18	F1707/8
1"	11	33.25	65	18	F1701
1.1/8	11	37.89	75	20	F1701.1/8
1.1/4	11	41.91	75	20	F1701.1/4
1.1/2	11	47.80	90	22	F1701.1/2
2"	11	59.61	105	22	F1702

F180

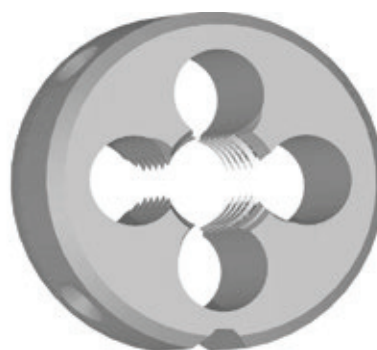
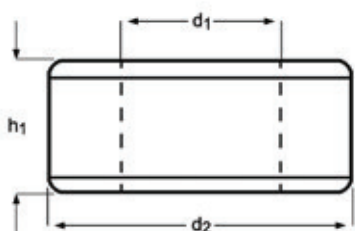
NPT
ISO 2568
Normal
1.75XP
HSS



- NPT 带刃倾角板牙
- NPT Cossinete
- NPT Terrajas de roscar
- NPT Gun Nosed Die

F180

F180	▪	1.1	1.2	1.3	3.1	3.2	3.3	7.1	7.2	7.3						
	•	1.4	2.1	2.2	3.4	4.3	5.1	5.2	5.3	6.1	6.2	6.3	7.4	8.1	8.2	8.3



NPT	TPI	d_1 nom mm	d_2 \varnothing mm	h_1 mm	F180
1/8	27	9.49	30	11	F1801/8
1/4	18	12.49	38	14	F1801/4
3/8	18	15.93	45	14	F1803/8
1/2	14	19.77	45	18	F1801/2
3/4	14	25.12	55	22	F1803/4
1"	11.5	31.46	65	25	F1801

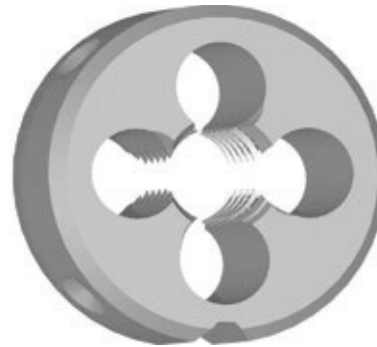
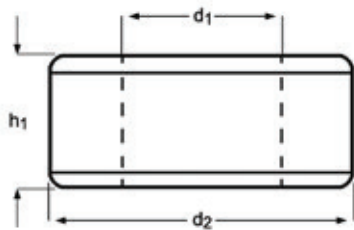
F190



- PG 带刃倾角板牙
- PG Cossinete
- PG Terrajas de roscar
- PG Gun Nosed Die

F190

F190	▪	1.1	1.2	1.3	3.1	3.2	3.3	7.1	7.2	7.3								
	•	1.4	2.1	2.2	3.4	4.3	5.1	5.2	5.3	6.1	6.2	6.3	7.4	8.1	8.2	8.3		



PG	TPI	d ₁ nom mm	d ₂ ∅ mm	h ₁ mm	F190
7	20	12.5	38	10	F190PG7
9	18	15.2	38	10	F190PG9
11	18	18.6	45	14	F190PG11
13.5	18	20.4	45	14	F190PG13.5
16	18	22.5	55	16	F190PG16
21	16	28.3	65	18	F190PG21
29	16	37.0	65	18	F190PG29
36	16	47.0	90	22	F190PG36

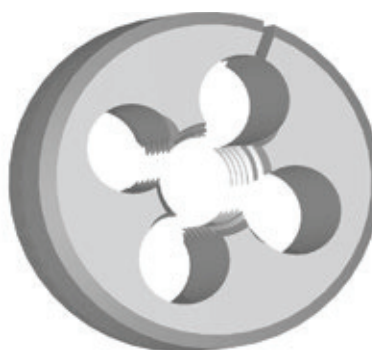
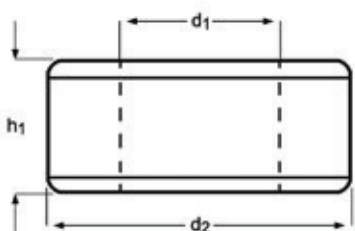
F300



- M 可调节板牙
- M Cossinetes ajustáveis
- M Terraja tipo abierto
- M Adjustable Dies

F300

F300	▪	1.1	1.2	1.3	3.1	3.2	3.3	7.1	7.2	7.3						
	•	1.4	2.1	2.2	3.4	4.3	5.1	5.2	5.3	6.1	6.2	6.3	7.4	8.1	8.2	8.3



M	P mm	d ₂ Ø Inch	h ₁ Inch	F300
2	0.40	13/16	1/4	F300M2X13/16
2.5	0.45	13/16	1/4	F300M2.5X13/16
3	0.50	13/16	1/4	F300M3X13/16
3.5	0.60	13/16	1/4	F300M3.5X13/16
4	0.70	13/16	1/4	F300M4X13/16
5	0.80	13/16	1/4	F300M5X13/16
5	0.80	1"	3/8	F300M5X1
6	1.00	13/16	1/4	F300M6X13/16
6	1.00	1"	3/8	F300M6X1
6	1.00	1.5/16	7/16	F300M6X1.5/16
7	1.00	13/16	1/4	F300M7X13/16
7	1.00	1"	3/8	F300M7X1
8	1.25	1"	3/8	F300M8X1
8	1.25	1.5/16	7/16	F300M8X1.5/16
9	1.25	1"	3/8	F300M9X1
9	1.25	1.5/16	7/16	F300M9X1.5/16
10	1.50	1"	3/8	F300M10X1
10	1.50	1.5/16	7/16	F300M10X1.5/16
10	1.50	1.1/2	1/2	F300M10X1.1/2
11	1.50	1.5/16	7/16	F300M11X1.5/16
12	1.75	1.5/16	7/16	F300M12X1.5/16
12	1.75	1.1/2	1/2	F300M12X1.1/2
14	2.00	1.5/16	7/16	F300M14X1.5/16
14	2.00	1.1/2	1/2	F300M14X1.1/2
16	2.00	1.1/2	1/2	F300M16X1.1/2
16	2.00	2"	5/8	F300M16X2
18	2.50	1.1/2	1/2	F300M18X1.1/2
18	2.50	2"	5/8	F300M18X2
20	2.50	1.1/2	1/2	F300M20X1.1/2
20	2.50	2"	5/8	F300M20X2
22	2.50	2"	5/8	F300M22X2
24	3.00	2"	5/8	F300M24X2
27	3.00	3"	7/8	F300M27X3
30	3.50	3"	7/8	F300M30X3
36	4.00	3"	7/8	F300M36X3

F310

MF

BS
1127:
1950

1.75XP

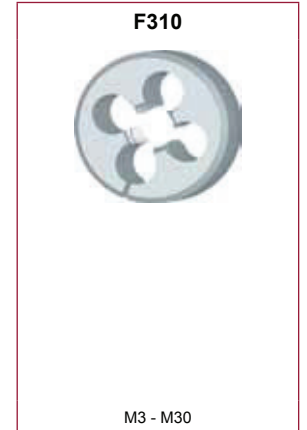
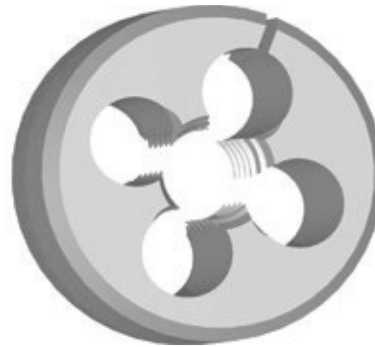
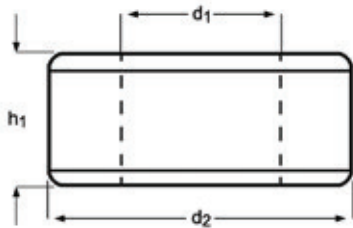
HSS



- MF 可调节板牙
- MF Cossinetes ajustáveis
- MF Terraja tipo abierto
- MF Adjustable Dies

F310

F310	▪	1.1	1.2	1.3	3.1	3.2	3.3	7.1	7.2	7.3						
	•	1.4	2.1	2.2	3.4	4.3	5.1	5.2	5.3	6.1	6.2	6.3	7.4	8.1	8.2	8.3



MF	P mm	d ₂ Ø Inch	h ₁ Inch	F310
3	0.35	13/16	1/4	F310M3X.35X13/16
4	0.50	13/16	1/4	F310M4X.5X13/16
4	0.75	13/16	1/4	F310M4X.75X13/16
5	0.50	13/16	1/4	F310M5X.5X13/16
5	0.90	13/16	1/4	F310M5X.9X13/16
6	0.75	13/16	1/4	F310M6X.75X13/16
8	0.75	1"	3/8	F310M8X.75X1
8	1.00	1"	3/8	F310M8X1.0X1
9	1.00	1"	3/8	F310M9X1.0X1
10	0.75	1"	3/8	F310M10X.75X1
10	1.00	1"	3/8	F310M10X1.0X1
10	1.25	1"	3/8	F310M10X1.25X1
10	1.25	1.5/16	7/16	F310M10X1.25X1.5/16
12	1.00	1.5/16	7/16	F310M12X1.0X1.5/16
12	1.25	1.5/16	7/16	F310M12X1.25X1.5/16
12	1.50	1.5/16	7/16	F310M12X1.5X1.5/16
14	1.25	1.5/16	7/16	F310M14X1.25X1.5/16
14	1.50	1.5/16	7/16	F310M14X1.5X1.5/16
16	1.00	1.1/2	1/2	F310M16X1.0X1.1/2
16	1.50	1.1/2	1/2	F310M16X1.5X1.1/2
18	1.50	1.1/2	1/2	F310M18X1.5X1.1/2
20	1.00	1.1/2	1/2	F310M20X1.0X1.1/2
20	1.50	2"	5/8	F310M20X1.5X2
20	2.00	1.1/2	1/2	F310M20X2.0X1.1/2
22	1.50	2"	5/8	F310M22X1.5X2
24	1.50	2"	5/8	F310M24X1.5X2
24	2.00	2"	5/8	F310M24X2.0X2
25	1.50	2"	5/8	F310M25X1.5X2
27	2.00	2.1/4	11/16	F310M27X2.0X2.1/4
30	2.00	2.1/4	11/16	F310M30X2.0X2.1/4

F320

UNC

BS
1127:
1950

1.75XP

HSS



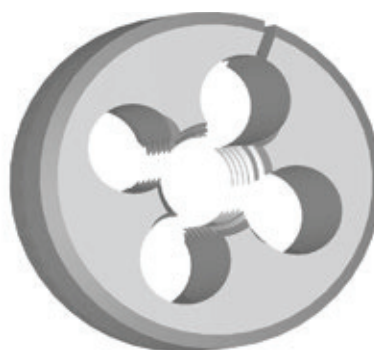
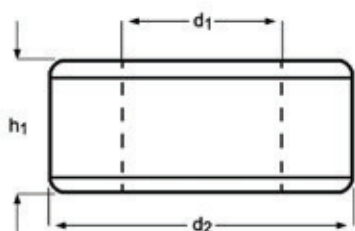
L120

309

- UNC 可调节板牙
- UNC Cossinetes ajustáveis
- UNC Terraja tipo abierto
- UNC Adjustable Dies

F320

F320	▪	1.1	1.2	1.3	3.1	3.2	3.3	7.1	7.2	7.3						
	•	1.4	2.1	2.2	3.4	4.3	5.1	5.2	5.3	6.1	6.2	6.3	7.4	8.1	8.2	8.3



UNC	TPI	d ₁ nom mm	d ₂ Ø Inch	h ₁ Inch	F320
4	40	2.85	13/16	1/4	F3204-40X13/16
5	40	3.18	13/16	1/4	F3205-40X13/16
6	32	3.51	13/16	1/4	F3206-32X13/16
8	32	4.17	13/16	1/4	F3208-32X13/16
8	32	4.17	1"	3/8	F3208-32X1
10	24	4.83	13/16	1/4	F32010-24X13/16
10	24	4.83	1"	3/8	F32010-24X1
12	24	5.49	13/16	1/4	F32012-24X13/16
1/4	20	6.35	13/16	1/4	F3201/4X13/16
1/4	20	6.35	1"	3/8	F3201/4X1
1/4	20	6.35	1.5/16	7/16	F3201/4X1.5/16
1/4	20	6.35	1.1/2	1/2	F3201/4X1.1/2
5/16	18	7.94	1"	3/8	F3205/16X1
5/16	18	7.94	1.1/2	1/2	F3205/16X1.1/2
3/8	16	9.53	1"	3/8	F3203/8X1
3/8	16	9.53	1.5/16	7/16	F3203/8X1.5/16
3/8	16	9.53	1.1/2	1/2	F3203/8X1.1/2
7/16	14	11.11	1.5/16	7/16	F3207/16X1.5/16
7/16	14	11.11	1.1/2	1/2	F3207/16X1.1/2
1/2	13	12.70	1.5/16	7/16	F3201/2X1.5/16
1/2	13	12.70	1.1/2	1/2	F3201/2X1.1/2
1/2	13	12.70	2"	5/8	F3201/2X2
9/16	12	14.29	1.1/2	1/2	F3209/16X1.1/2
5/8	11	15.88	1.1/2	1/2	F3205/8X1.1/2
5/8	11	15.88	2"	5/8	F3205/8X2
3/4	10	19.05	1.1/2	1/2	F3203/4X1.1/2
3/4	10	19.05	2"	5/8	F3203/4X2
7/8	9	22.23	2"	5/8	F3207/8X2
1"	8	25.40	2"	5/8	F3201X2
1.1/8	7	28.58	3"	7/8	F3201.1/8X3
1.1/4	7	31.75	3"	7/8	F3201.1/4X3

F330

UNF

BS
1127:
1950

1.75XP

HSS



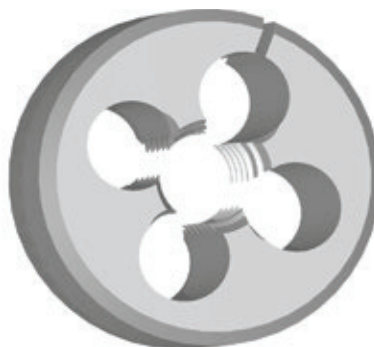
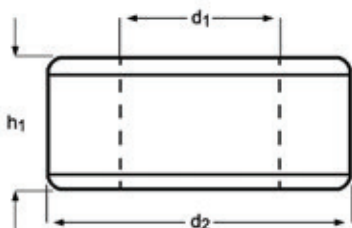
L120

309

- UNF 可调节板牙
- UNF Cossinetes ajustáveis
- UNF Terraja tipo abierto
- UNF Adjustable Dies

F330

F330	■	1.1	1.2	1.3	3.1	3.2	3.3	7.1	7.2	7.3						
	•	1.4	2.1	2.2	3.4	4.3	5.1	5.2	5.3	6.1	6.2	6.3	7.4	8.1	8.2	8.3



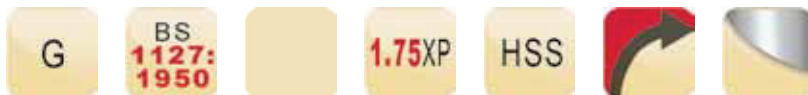
F330



No.4 - 1.1/2

UNF	TPI	d ₁ nom mm	d ₂ Ø Inch	h ₁ Inch	F330
4	48	2.85	13/16	1/4	F3304-48X13/16
5	44	3.18	13/16	1/4	F3305-44X13/16
6	40	3.51	13/16	1/4	F3306-40X13/16
8	36	4.17	13/16	1/4	F3308-36X13/16
10	32	4.83	13/16	1/4	F33010-32X13/16
10	32	4.83	1"	3/8	F33010-32X1
12	28	5.49	13/16	1/4	F33012-28X13/16
1/4	28	6.35	13/16	1/4	F3301/4X13/16
1/4	28	6.35	1"	3/8	F3301/4X1
1/4	28	6.35	1.1/2	1/2	F3301/4X1.1/2
5/16	24	7.94	1"	3/8	F3305/16X1
5/16	24	7.94	1.5/16	7/16	F3305/16X1.5/16
5/16	24	7.94	1.1/2	1/2	F3305/16X1.1/2
3/8	24	9.53	1"	3/8	F3303/8X1
3/8	24	9.53	1.5/16	7/16	F3303/8X1.5/16
3/8	24	9.53	1.1/2	1/2	F3303/8X1.1/2
7/16	20	11.11	1"	3/8	F3307/16X1
7/16	20	11.11	1.5/16	7/16	F3307/16X1.5/16
7/16	20	11.11	1.1/2	1/2	F3307/16X1.1/2
1/2	20	12.70	1.5/16	7/16	F3301/2X1.5/16
1/2	20	12.70	1.1/2	1/2	F3301/2X1.1/2
9/16	18	14.29	1.5/16	7/16	F3309/16X1.5/16
9/16	18	14.29	1.1/2	1/2	F3309/16X1.1/2
5/8	18	15.88	1.1/2	1/2	F3305/8X1.1/2
5/8	18	15.88	2"	5/8	F3305/8X2
3/4	16	19.05	1.1/2	1/2	F3303/4X1.1/2
3/4	16	19.05	2"	5/8	F3303/4X2
7/8	14	22.23	2"	5/8	F3307/8X2
1"	12	25.40	2"	5/8	F3301X2
1.1/8	12	28.58	3"	7/8	F3301.1/8X3
1.1/4	12	31.75	3"	7/8	F3301.1/4X3
1.1/2	12	38.10	3"	7/8	F3301.1/2X3

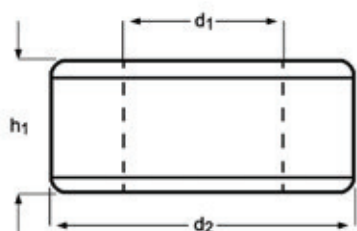
F370



- G(BSP) 可调节板牙
- G(BSP) Cossinetes ajustáveis
- G(BSP) Terraaja tipo abierto
- G(BSP) Adjustable Dies

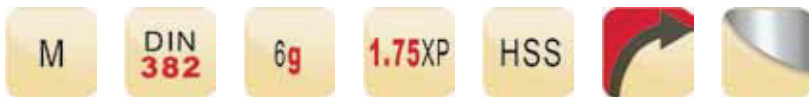
F370

F370	▪	1.1	1.2	1.3	3.1	3.2	3.3	7.1	7.2	7.3						
	•	1.4	2.1	2.2	3.4	4.3	5.1	5.2	5.3	6.1	6.2	6.3	7.4	8.1	8.2	8.3



G(BSP)	TPI	d ₁ nom mm	d ₂ Ø Inch	h ₁ Inch	F370
1/8	28	9.73	1"	3/8	F3701/8X1
1/4	19	13.16	1.5/16	7/16	F3701/4X1.5/16
3/8	19	16.66	1.1/2	1/2	F3703/8X1.1/2
1/2	14	20.96	2"	5/8	F3701/2X2
5/8	14	22.91	2"	5/8	F3705/8X2
3/4	14	26.44	2"	5/8	F3703/4X2
7/8	14	30.20	2.1/4	11/16	F3707/8X2.1/4
1"	11	33.25	2.1/4	11/16	F3701X2.1/4
1.1/4	11	41.91	3"	7/8	F3701.1/4X3
1.1/2	11	47.80	4"	1"	F3701.1/2X4

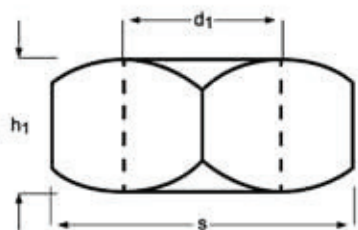
F202



- M 六角板牙
- M Cossinetes Sextavados
- M Terrajas, exterior hexagonal
- M Dienuts

F202

F202	▪	1.1	1.2	1.3	3.1	3.2	3.3	7.1	7.2	7.3						
	•	1.4	2.1	2.2	3.4	4.3	5.1	5.2	5.3	6.1	6.2	6.3	7.4	8.1	8.2	8.3



M	P mm	S mm	h ₁ mm	F202
3	0.50	19	5	F202M3
4	0.70	19	5	F202M4
5	0.80	19	7	F202M5
6	1.00	19	7	F202M6
7	1.00	22	9	F202M7
8	1.25	22	9	F202M8
10	1.50	27	11	F202M10
12	1.75	36	14	F202M12
14	2.00	36	14	F202M14
16	2.00	41	18	F202M16
18	2.50	41	18	F202M18
20	2.50	41	18	F202M20
22	2.50	50	22	F202M22
24	3.00	50	22	F202M24
27	3.00	60	25	F202M27
30	3.50	60	25	F202M30
36	4.00	60	25	F202M36

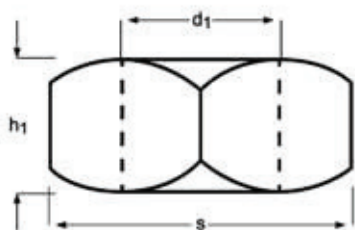
F302



- M 六角板牙
- M Cossinetes Sextavados
- M Terrajas, exterior hexagonal
- M Dienuts

F302

F302	▪	1.1	1.2	1.3	3.1	3.2	3.3	7.1	7.2	7.3						
	•	1.4	2.1	2.2	3.4	4.3	5.1	5.2	5.3	6.1	6.2	6.3	7.4	8.1	8.2	8.3



M	P mm	S decimal Inch	h ₁ Inch	F302
3	0.50	0.7100	1/4	F302M3
4	0.70	0.7100	1/4	F302M4
5	0.80	0.7100	1/4	F302M5
6	1.00	0.7100	1/4	F302M6
7	1.00	0.8200	5/16	F302M7
8	1.25	0.8200	5/16	F302M8
10	1.50	0.9200	3/8	F302M10
11	1.50	1.0100	7/16	F302M11
12	1.75	1.1000	1/2	F302M12
14	2.00	1.3000	5/8	F302M14
16	2.00	1.3000	5/8	F302M16
18	2.50	1.4800	11/16	F302M18
20	2.50	1.4800	11/16	F302M20
22	2.50	1.6700	13/16	F302M22
24	3.00	2.0500	15/16	F302M24
27	3.00	2.2200	1.1/16	F302M27
30	3.50	2.2200	1.1/16	F302M30
33	3.50	2.5800	1.1/8	F302M33
36	4.00	2.7600	1.1/4	F302M36

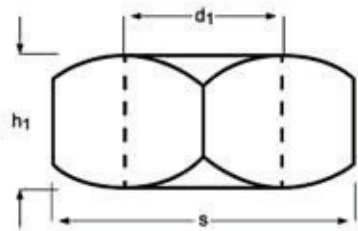
F312



- MF 六角板牙
- MF Cossinetes Sextavados
- MF Terrajas, exterior hexagonal
- MF Dienuts

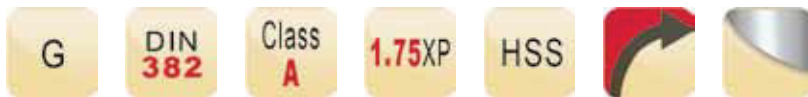
F312

F312	▪	1.1	1.2	1.3	3.1	3.2	3.3	7.1	7.2	7.3							
	•	1.4	2.1	2.2	3.4	4.3	5.1	5.2	5.3	6.1	6.2	6.3	7.4	8.1	8.2	8.3	



MF	P mm	S decimal Inch	h ₁ Inch	F312
8	0.75	0.8200	5/16	F312M8X.75
8	1.00	0.8200	5/16	F312M8X1.0
10	1.00	0.9200	3/8	F312M10X1.0
10	1.25	0.9200	3/8	F312M10X1.25
12	1.00	1.0100	7/16	F312M12X1.0
12	1.25	1.0100	7/16	F312M12X1.25
12	1.50	1.0100	7/16	F312M12X1.5
14	1.50	1.3000	5/8	F312M14X1.5
16	1.50	1.3000	5/8	F312M16X1.5
18	1.50	1.4800	11/16	F312M18X1.5
20	1.50	1.4800	11/16	F312M20X1.5
22	1.50	1.6700	13/16	F312M22X1.5
24	1.50	2.0500	15/16	F312M24X1.5
24	2.00	2.0500	15/16	F312M24X2.0

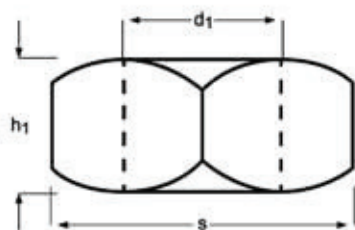
F272



- G(BSP) 六角板牙
- G(BSP) Cossinetes Sextavados
- G(BSP) Terrajas, exterior hexagonal
- G(BSP) Dienuts

F272

F272	▪	1.1	1.2	1.3	3.1	3.2	3.3	7.1	7.2	7.3						
	•	1.4	2.1	2.2	3.4	4.3	5.1	5.2	5.3	6.1	6.2	6.3	7.4	8.1	8.2	8.3



G(BSP)	TPI	d ₁ nom mm	S mm	h ₁ mm	F272
1/8	28	9.73	27	11	F2721/8
1/4	19	13.16	36	10	F2721/4
3/8	19	16.66	41	14	F2723/8
1/2	14	20.96	41	14	F2721/2
3/4	14	26.44	60	18	F2723/4
1"	11	33.25	60	18	F2721
1.1/4	11	41.91	70	20	F2721.1/4
1.1/2	11	47.80	85	22	F2721.1/2